



# GAT MONTHLY MEMBERSHIP PROGRESS REPORT

Results as of: 2/28/2022

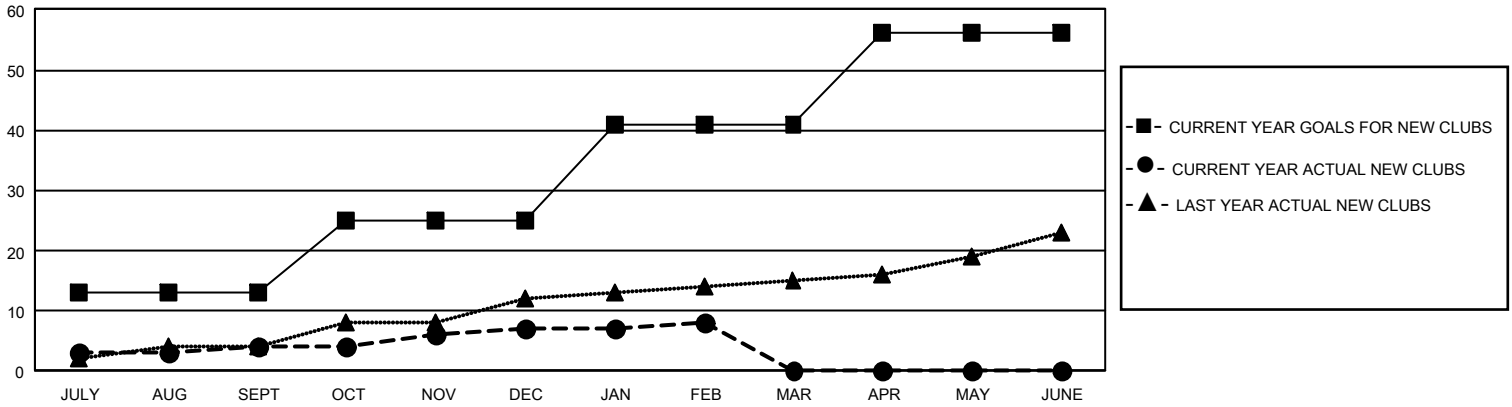
## GMT Constitutional Area 1, Group B

REPORT DOES NOT INCLUDE CLUBS IN UNDISTRICTED AREAS.

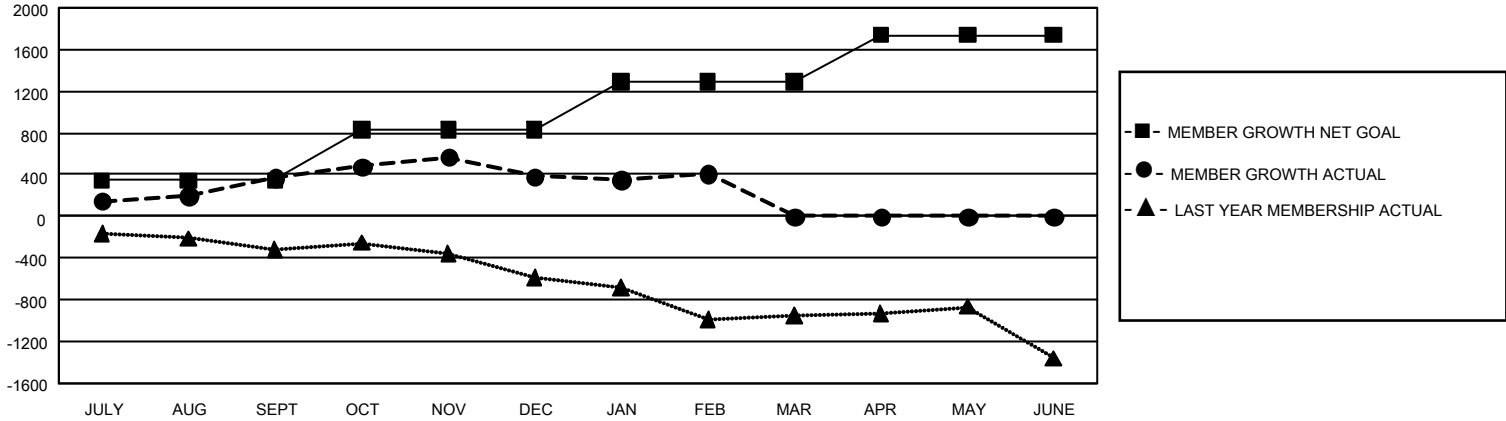
Clubs			
RESULTS FOR 2021-2022			
QUARTER	NEW CLUB GOAL	NEW CLUBS	DROPPED CLUBS
JULY/AUG/SEPT	39	4	16
OCT/NOV/DEC	36	3	14
JAN/FEB/MAR	48	1	7
APR/MAY/JUNE	45	0	0

Members			
RESULTS FOR 2021-2022			
QUARTER	MEMBER GROWTH NET GOAL	MEMBER GROWTH ACTUAL	DROPPED MEMBERS ACTUAL (including transfers)
JULY/AUG/SEPT	345	1,471	917
OCT/NOV/DEC	482	973	881
JAN/FEB/MAR	460	594	494
APR/MAY/JUNE	452	0	0

GOALS AND ACTUAL NEW CLUBS CUMULATIVE



GOALS AND ACTUAL MEMBERS CUMULATIVE



<b>DROPPED CLUBS: 37</b>	484 CLUBS OF 931 ADDED 1 OR MORE NEW MEMBERS	<b><u>GENDER DISTRIBUTION</u></b>	
		MALE 13,999 (58.46%) FEMALE 9,941 (41.51%) NON BINARY 1 (0.00%) PREFER NOT TO ANSWER 6 (0.03%)	
<b><u>DROPPED MEMBERS</u></b>		<a href="#">CLICK HERE FOR CUMULATIVE MEMBERSHIP DATA</a>	TOTAL FAMILY UNIT MEMBERS 4,719
DECEASED 242 CLUB CANCELLED 174 OTHER 1,877 <b>TOTAL 2,293</b>	FAMILY MEMBERS PAYING HALF DUES 2,479		